



ASCENT

HILLSIDE LEADERSHIP AND VOLUNTEER CONFERENCE

Eyes and Ears /Medical Response Team Training

BREAKOUT OVERVIEW



Part 1:
Mission



Part 3:
Training



Part 2:
Goals



Part 4:
Summary



MISSION



Part 1:
Mission

HILLSIDE'S MISSION IN OUR MINISTRY

To help people discover who Jesus really is, and live with, like, and for Him, now and forever.



WHY?

To create a safe and secure environment so that the mission of Hillside can be accomplished.



GOALS



Part 2:
Goals

Radio Etiquette

Suspicious Persons

Fire Evacuation

Severe Weather/
Shelter in Place



TRAINING + STRATEGY



Part 3:
Training +
Strategy

Be alert and ready to help in case of emergency.

Know the material (Safety and Security Manual).

Please know that you are appreciated by our staff and congregation!



Radio Etiquette

Identify Yourself and Your Location

Try to keep chatter at a minimum.
If you need assistance, identify yourself,
your location, and what you need.





Identify and De-escalate Suspicious Persons

- Approach and Ask Questions
- Active Listening
- Read the Body Language



Approach to Ask Questions

- Ask 'get to know you' questions
- Take a walk with them
- Lots of eye contact

Prepare ahead and have a fellow E&E or staff available to assist.



Active Listening

- Give them your undivided attention
- Non-judgmental and compassionate
- Focus on their feelings
- Repeat back to them what they've said

This can be useful in so many areas of our lives!



Read the Body Language

- Look for signs of stress
- Creating a platform for action
- Flag someone down for assistance

Prepare ahead and have a fellow E&E or staff available to assist.





Fire Drill/ Evacuation

Know how to safely and efficiently evacuate the campus.



Evacuation Protocol

- Everyone evacuates to the north and south, to grassy areas
- Children stay with classrooms, will dismiss from classrooms only
- Keep people out of fire lanes,
 - People should not leave until emergency vehicles have arrived

MRT Tip: please evacuate the building at the closest exit, but then proceed to the Southern grassy area to assist the Children's Ministry.



Severe Weather / Shelter In Place

Assist in securing the Childrens and Student
Ministry



Shelter In Place Protocol

- All E&E to assist Children's Ministry
- Each room has an Evacuation Map hanging on the wall. They are designed to travel with the classroom teacher.
- Parents cannot pick up children until 'All Clear' has been issued

MRT Tip: Please go to the Children's Ministry Building as quick as possible to SIP with them and provide medical attention if needed.



**SHELTER
IN PLACE!**



Summary

Any questions or concerns?

Future Training?

What do you all suggest for our next training?

What is the best time for this?

Always looking for more team members!

Especially for first service.

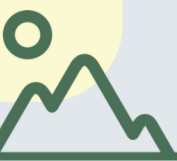
Planning Center Services

Put the App on your phone, you can accept or decline from there. Also block out dates.

Lindsay's cell # 817-965-5972

E&E Shirts

Wash inside out and hang to dry!



Thank you!

